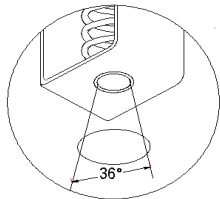
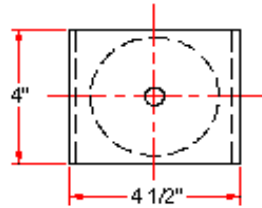
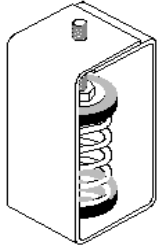


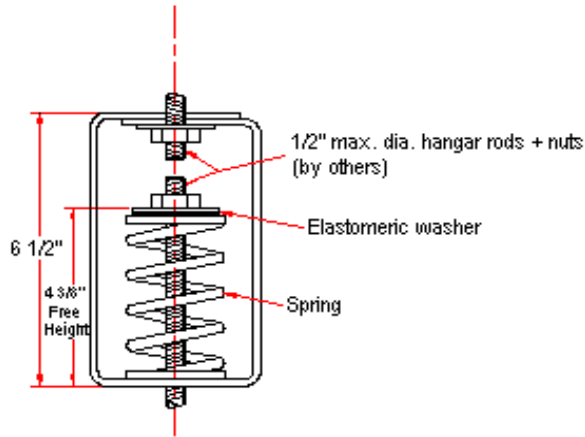
VIBRATION MANAGEMENT CORPORATION

3532-A EAST TC JESTER , BROOKWOOD BUSINESS PARK , HOUSTON , TEXAS 77018 , U.S.A

INTERNET ADDRESS: www.vimco.biz



Not applicable with booster springs



N.T.S.

ISOLATOR MODEL	RATED LOAD (lbs)	SOLID LOAD (lbs)	OPERATING LOAD RANGE (lbs)
HSC-134	666	1000	582 - 832
HSC-138	866	1300	607 - 1082
HSC-138-104	982	1474	1083 - 1227
HSC-138-106	1116	1675	1228 - 1395
HSC-138-108	1321	1982	1396 - 1651
HSC-138-110	1426	2140	1652 - 1783
HSC-138-112	1866	2800	1784 - 2332

+ Operating load ranges mentioned above offer the most economical isolator selection consistent with VIMCO suggested specifications. Contact factory for other selection options

FEATURES

- * Spring elements color-coded for easy field verification
- * Load distribution steel washer

NOTES

1. Springs have 50% additional travel to solid beyond rated load.
2. Isolators should be selected in the range of -30% to +25% of rated load.
3. Consult spring chart for isolator performance data.
4. Nuts, washers & rods by others.

Notes / Remarks :

Project :
Client :
Consultant :
Representative :

Title :

HSC
Spring Hangar
(1" deflection)

Drawing no.
S-2100.03

Rev. **ME-1**