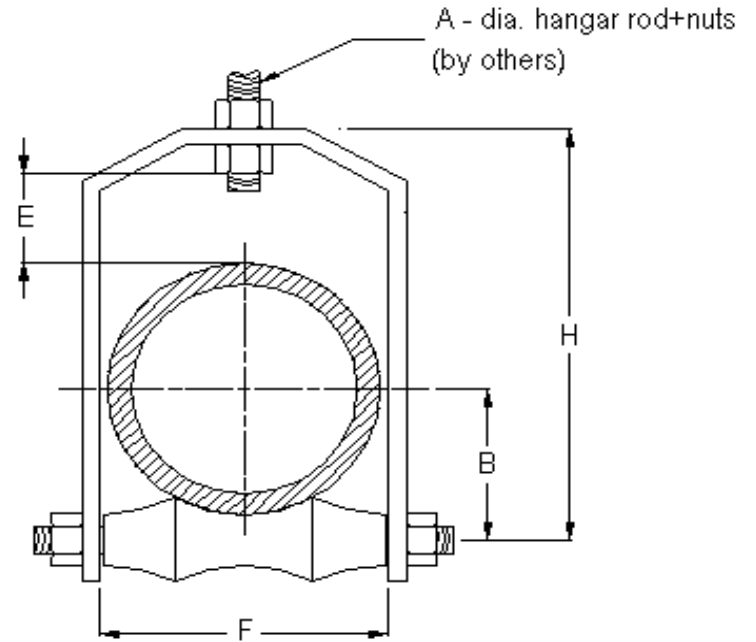


# VIBRATION MANAGEMENT CORPORATION

3532-A EAST TC JESTER , BROOKWOOD BUSINESS PARK , HOUSTON , TEXAS 77018 , U.S.A

INTERNET ADDRESS: [www.vimco.biz](http://www.vimco.biz)

MODEL	PIPE SIZE (inches)	PART DIMENSIONS (inches)					MAX. LOAD (lbs)
		A	B	E	F	H	
LRH-20-P/G	2	3/8	1 9/16	1 7/16	2 7/8	4 3/4	150
LRH-25-P/G	2 1/2	1/2	1 7/8	2	3 1/4	6	225
LRH-30-P/G	3	1/2	2 3/16	2	3 7/8	6 5/8	310
LRH-35-P/G	3 1/2	1/2	2 1/2	2	4 3/8	7 1/4	390
LRH-40-P/G	4	5/8	2 3/4	2	4 7/8	7 7/8	475
LRH-50-P/G	5	5/8	3 3/8	2	5 15/16	9 3/16	685
LRH-60-P/G	6	3/4	3 15/16	2	7	10 3/8	780
LRH-80-P/G	8	7/8	5 1/16	2	9	12 5/8	780
LRH-100-P/G	10	7/8	6 1/4	2 1/16	11 1/8	14 15/16	965
LRH-120-P/G	12	7/8	7 3/8	2 1/4	13 3/8	17 3/8	1200
LRH-140-P/G	14	1	8 1/4	2 1/4	14 1/2	19	1200
LRH-160-P/G	16	1	9 1/4	2	16 3/8	20 3/4	1200
LRH-180-P/G	18	1	10 3/8	2 11/16	18 3/8	23 11/16	1400
LRH-200-P/G	20	1 1/4	11 1/2	2 1/2	20 3/8	25 7/8	1600
LRH-240-P/G	24	1 1/2	13 13/16	4 1/2	24 1/2	32 9/16	1600
LRH-300-P/G	30	1 1/2	17 1/4	5 1/2	30 5/8	40	1600



Item	Description
Bracket	Low carbon steel
Roller	Cast Iron
Axle + hex nut	Low carbon steel

### NOTES

- Choose appropriate model for required finish:  
P - Plain , G - Electroplated
- Refer protection shield catalogs for sizing information for insulated pipes.

### APPLICATION

- \* Suspension of insulated / non-insulated pipes where longitudinal movement, due to expansion and contraction, may occur, and vertical adjustment is required.

### FEATURES

- \* Design allows for vertical adjustment of pipe after installation.

### SPECIFICATIONS

- \* Complies with Federal Specification WW-H-171E (Type 44)
- \* Complies with Manufacturer's Standardization Society SP-69 & SP-58 (Type 43)

Notes / Remarks :	Project :	<b>Title : LRH Roller Hanger (long)</b>	<b>Drawing no. S-2730.31</b>
	Client :		
	Consultant :		
	Representative :		
			Rev. 1