

# VIBRATION MANAGEMENT CORPORATION

3532-A EAST TC JESTER , BROOKWOOD BUSINESS PARK , HOUSTON , TEXAS 77018 , U.S.A

INTERNET ADDRESS: [www.vimco.biz](http://www.vimco.biz)

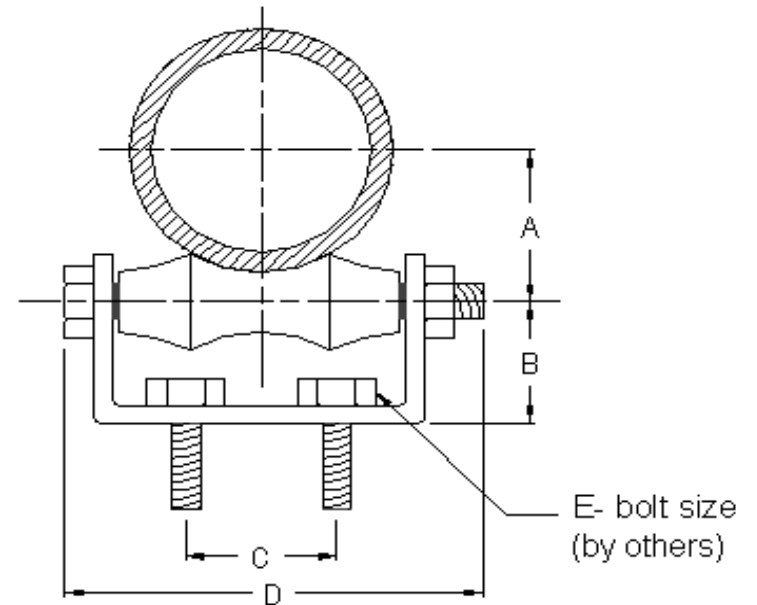
MODEL	PIPE SIZE (inches)	PART DIMENSIONS (inches)					MAX. LOAD (lbs)
		A	B	C	D	E	
LRC-20-P/G	2	1 9/16	1 1/2	1 1/4	4 5/8	3/8 x 1 1/2	300
LRC-25-P/G	2 1/2	1 7/8	1 5/8	1 1/4	5 3/8	3/8 x 1 1/2	600
LRC-30-P/G	3	2 3/16	1 3/4	2	6	3/8 x 1 1/2	600
LRC-35-P/G	3 1/2	2 1/2	2 1/16	2	6 3/4	3/8 x 1 1/2	600
LRC-40-P/G	4	2 3/4	2 5/16	2	7 1/4	1/2 x 1 1/2	700
LRC-50-P/G	5	3 3/8	2 1/2	3	8 7/16	1/2 x 1 1/2	700
LRC-60-P/G	6	3 15/16	2 3/4	3 1/8	9 3/4	1/2 x 1 1/2	1000
LRC-80-P/G	8	5 1/16	3	3 3/8	12	5/8 x 1 1/2	1300
LRC-100-P/G	10	6 1/4	3 5/8	5 1/4	14 7/16	5/8 x 2	1700
LRC-120-P/G	12	7 3/8	4 1/8	5 1/2	16 5/8	5/8 x 2	2300
LRC-140-P/G	14	8 1/4	4 5/8	5 3/4	18 3/8	5/8 x 2	3000
LRC-160-P/G	16	9 1/4	5 1/4	8	20 5/8	5/8 x 2	4000
LRC-180-P/G	18	10 3/8	5 1/8	9 1/2	22 5/8	5/8 x 2	4000
LRC-200-P/G	20	11 1/2	5 5/8	10	25	3/4 x 2 1/4	4000
LRC-240-P/G	24	13 13/16	6 5/8	12	29 3/4	3/4 x 2 1/4	4000
LRC-300-P/G	30	17 1/4	7 1/8	14	36 1/2	1 x 2 1/2	4000

### NOTES

- Choose appropriate model for required finish:  
P - Plain , G - Electroplated
- Refer protection shield catalogs for sizing information for insulated pipes.

### APPLICATION

- \* Support of insulated / non-insulated pipes where longitudinal movement, due to expansion and contraction, may occur, but vertical adjustment is not required.



### MATERIALS

Item	Description
Roller	Cast Iron
Chair	Low carbon steel
Axle + hex nut	Low carbon steel

### FEATURES

- \* Chair can be welded directly to structure or bolted in place using mounting holes which are standard construction.

### SPECIFICATIONS

- \* Complies with Federal Specification WW-H-171-E (Type 45)
- \* Complies with Manufacturer's Standardization Society SP-69 & SP-58 (Type 44)

Notes / Remarks :

Project :  
Client :  
Consultant :  
Representative :

Title :

**LRC**  
**Roller Chair (long)**

Drawing no.  
**S-2733.01**

Rev. 2