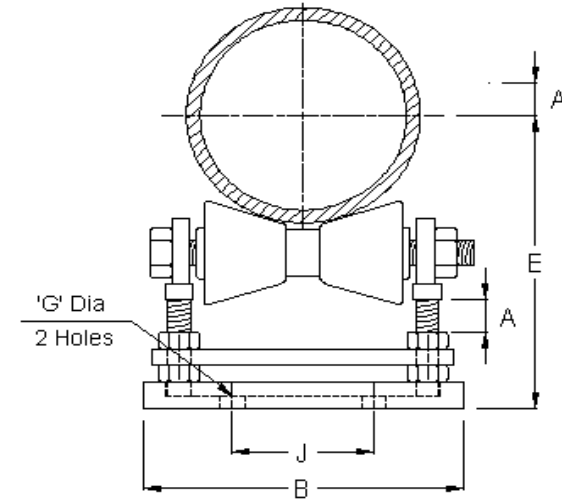


VIBRATION MANAGEMENT CORPORATION

3532-A EAST TC JESTER , BROOKWOOD BUSINESS PARK , HOUSTON , TEXAS 77018 , U.S.A

INTERNET ADDRESS: www.vimco.biz

MODEL	PIPE SIZE (inches)	PART DIMENSIONS (inches)					MAX. LOAD (lbs)
		A	B	E	G	J	
ASRS-20.35-P/G	2	7/8	5 1/2	4 3/4	9/16	1 1/2	390
	2 1/2	7/8	5 1/2	5	9/16	1 1/2	390
	3	7/8	5 1/2	5 5/16	9/16	1 1/2	390
	3 1/2	7/8	5 1/2	5 9/16	9/16	1 1/2	390
ASRS-40.60-P/G	4	1 1/4	6 3/4	6 3/16	9/16	2 1/4	950
	5	1 1/4	6 3/4	6 3/4	9/16	2 1/4	950
	6	1 1/4	6 3/4	7 1/4	9/16	2 1/4	950
ASRS-80.100-P/G	8	1 9/16	9	10 1/8	11/16	4	2100
	10	1 9/16	9	11 3/16	11/16	4	2100
ASRS-120.140-P/G	12	1 3/8	11 7/16	12 3/4	13/16	5 3/4	3075
	14	1 3/8	11 7/16	13 3/8	13/16	5 3/4	3075
ASRS-160.200-P/G	16	1 7/8	12 7/8	15 3/8	13/16	6 3/4	4980
	18	1 7/8	12 7/8	16 7/16	13/16	6 3/4	4980
	20	1 7/8	12 7/8	17 7/16	13/16	6 3/4	4980
ASRS-240-P/G	24	2	14	19 1/4	13/16	7 1/2	6100
ASRS-300-P/G	30	2 1/4	17 1/2	24 7/16	1 1/16	10	7500



MATERIALS

Item	Description
Chair	Low carbon steel
Roller	Cast Iron
Axle + hex nuts + bolts	Low carbon steel

FEATURES

- * Base plate can be welded directly to structure or bolted in place using mounting holes which are furnished as standard.
- * Design allows for vertical adjustment of pipe after installation.

SPECIFICATIONS

- * Complies with Federal Specification WW-H-171-E (Type 47)
- * Complies with Manufacturer's Standardization Society SP-69 & SP-58 (Type 46)

NOTES

1. Choose appropriate model for required finish:
P - Plain , G - Electroplated
2. Refer protection shield catalogs for sizing information for insulated pipes.

APPLICATION

- * Support of insulated / non-insulated pipes where longitudinal movement, due to expansion and contraction, may occur, and vertical adjustment is required.

Notes / Remarks :

Project :
Client :
Consultant :
Representative :

Title :

ASRS
Adjustable
Short Roller Stand

Drawing no.

S-2733.12

Rev. 0